

# Harcourts Kingsberry



## 66 Halstead Street Gulliver QLD

3 2 4

If you have been searching for more space for the family and storage for your toys, but not wanting to compromise on a central location minutes to Schools & Shops, then look no further than this lovingly cared for family home.

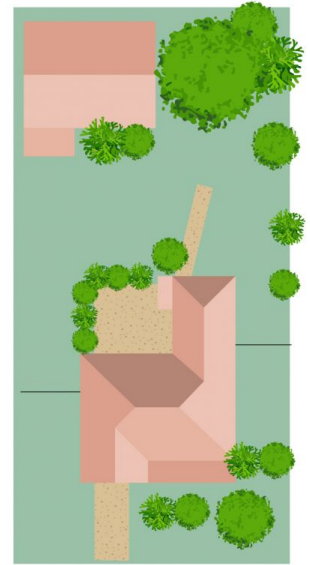
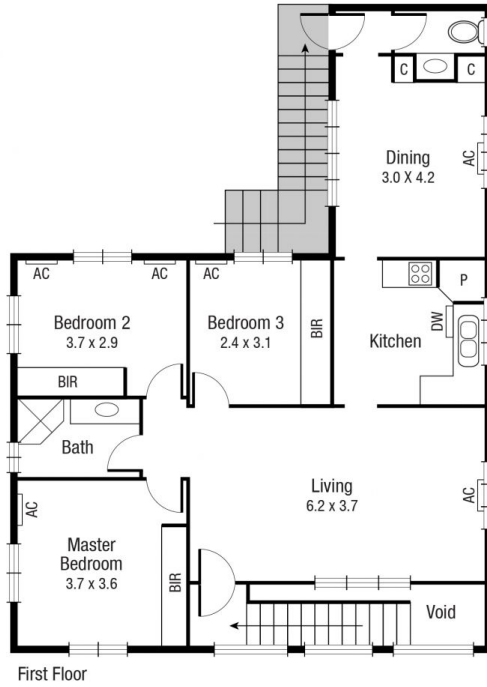
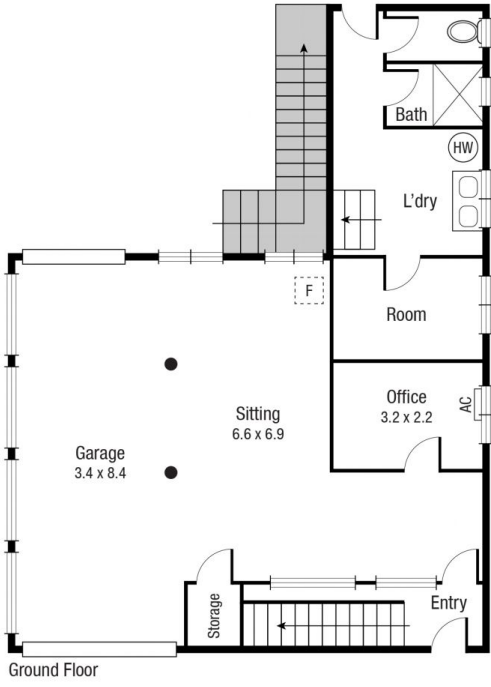
The Double Storey block home is positioned on a fully fenced 809sqm block. The front internal staircase brings you to the upper level where you will find a large living room, modern kitchen with quality appliances, formal dining space, large main bathroom with walk in shower and three generous bedrooms complete with built-in robes and air-conditioning.

The downstairs is legal height and fully enclosed making it perfect for large families. There is an open rumpus/living area, two additional rooms, a second bathroom and toilet along with single roller door for safe and secure storage of

**Price** : \$ 405,000  
**Land Size** : 809 sqm  
**View** : <https://www.kingsberry.com.au/sale/qld/townsville-district/gulliver/residential/house/7290088>



Adrian Raiteri  
07 4772 2022  
0427 673 612  
[adrian.raiteri@tsvharcourts.com.au](mailto:adrian.raiteri@tsvharcourts.com.au)



Scale in metres. Indicative only. Dimensions are approximate. All information contained herein is gathered from sources we believe to be reliable. However we cannot guarantee its accuracy and interested persons should rely on their own enquiries.

TOTAL AREA : 203.1 sq.m

66 Halstead St, Gulliver