

# Harcourts Kingsberry



## 5 Waterdragon Link Douglas QLD

4 2 2

From the moment that you step into this stylish family home you will be blown away by the sheer space and size of this property. Truly an entertainer's delight offering a wide selection of entertaining options.

Warm and welcoming space shines throughout the home. The vast living area is sure to impress highlighting cathedral ceilings. Timber French doors divide the living and dining adding a more formal feel to the dining area with pool views.

The tucked away kitchen is well equipped providing gas cooking, ample cupboard and bench space showcasing a servery bench that connects to the dining room.

The generous master bedroom is fit for a King, positioned at the rear of the home, complete with a sassy ensuite alongside double vanity and walk-in robe. The remaining bedrooms offer good size and all feature built in robes and air-conditioning.

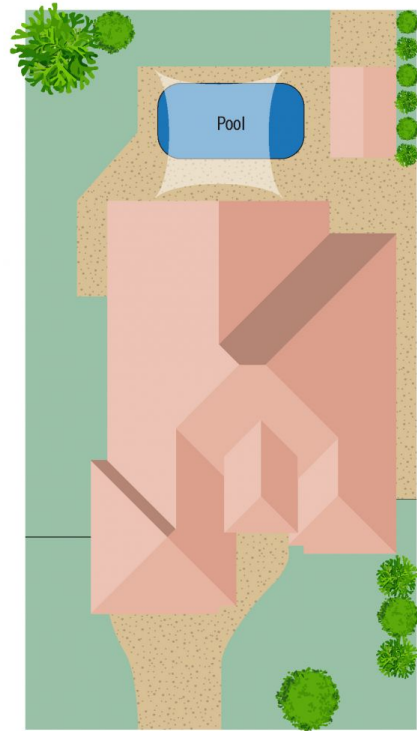
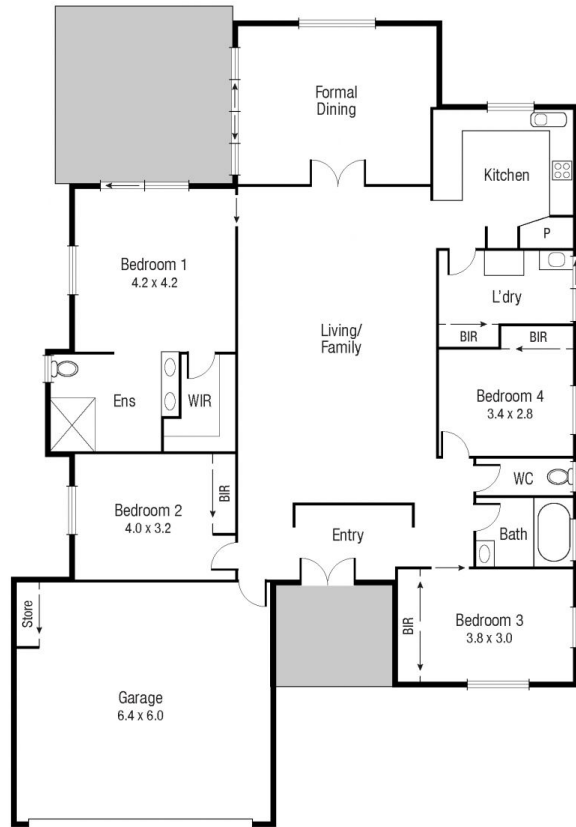
**Land Size** : 730 sqm

**View** : <https://www.kingsberry.com.au/sale/qld/townsville-district/douglas/residential/house/7418582>



Tammy Tyrrell  
07 4772 2022  
0412 534 704

[tammy.tyrrell@tsvharcourts.com.au](mailto:tammy.tyrrell@tsvharcourts.com.au)



Scale in metres. Indicative only. Dimensions are approximate. All information contained herein is gathered from sources we believe to be reliable. However we cannot guarantee its accuracy and interested persons should rely on their own enquiries.

TOTAL AREA : 225.8 sq.m

**5 Waterdragon Link, Douglas**