

Harcourts Kingsberry



22 McDonald Street Gulliver QLD

3 1 2

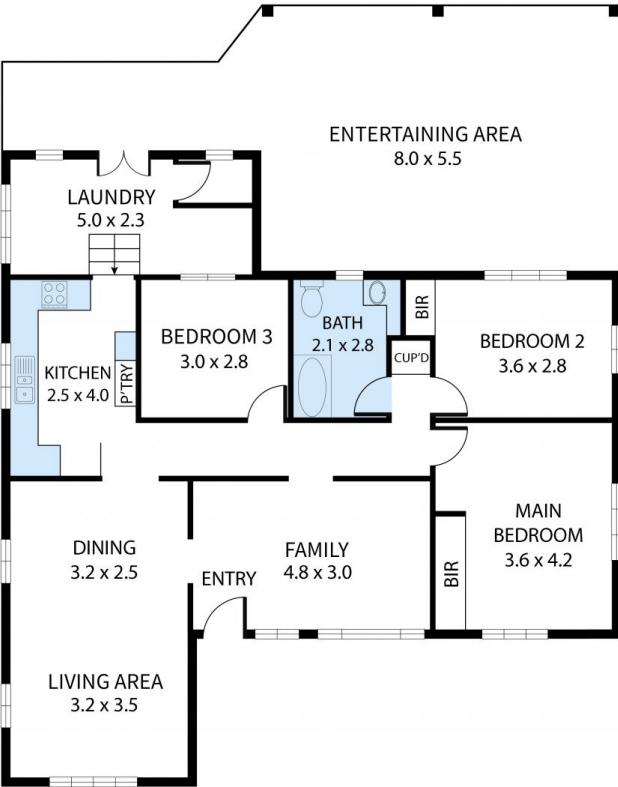
Be quick! This low-set, timber home has been freshly painted internally and externally, and is fully fenced and landscaped. There is a secure, spacious entertaining area and plenty of room for a pool and larger shed. The property is ideal for singles, business couples, first-home buyers, or downsizers wanting to enjoy quality living close to major amenities. Close to schools [Pimlico SHS catchment], TAFE, medical facilities, fruit barn, butcher, cake and coffee shops. This is a wonderful, well-established, in-demand area.

- 3 bedrooms with built-in wardrobes
- Open plan living /dining room
- Multiple living areas
- Tidy kitchen with pantry, cupboards & bench space
- Ceiling fans and window security
- Fully fenced, landscaped yard and shed
- 809sqm block with easy backyard access

Price : \$ 320,000
Land Size : 809 sqm
View : <https://www.kingsberry.com.au/sale/qld/townsville-district/gulliver/residential/house/7434016>



Malcolm Thomson
07 4772 2022
0400 545 664
malcolm.thomson@tsvharcourts.com.au



22 McDonald Street, Gulliver 4812

Whilst every attempt has been made to ensure the accuracy of the floor plan contained here, measurements of doors, windows, rooms and any other items are approximate and no responsibility is taken for any error, omission, or misstatement. This plan is for illustrative purposes only and should be used as such by any prospective purchaser.

