

# Harcourts Kingsberry



## 22 Elberry Crescent Kelso QLD

4 2 8

Welcome to your dream home! This stunning property boasts everything you could possibly want and more, situated on a huge 4364 meter squared block of land.

Inside, you'll find four spacious bedrooms, perfect for accommodating the whole family. The master bedroom features a private ensuite, while the remaining bedrooms are serviced by a central bathroom. Need a space to work or study? The study room is the perfect spot for productivity.

Entertaining is a breeze with the massive separate dining and living area, which flows effortlessly onto the outdoor alfresco area overlooking the pool. For a movie night in, the theatre room is the ultimate relaxation zone.

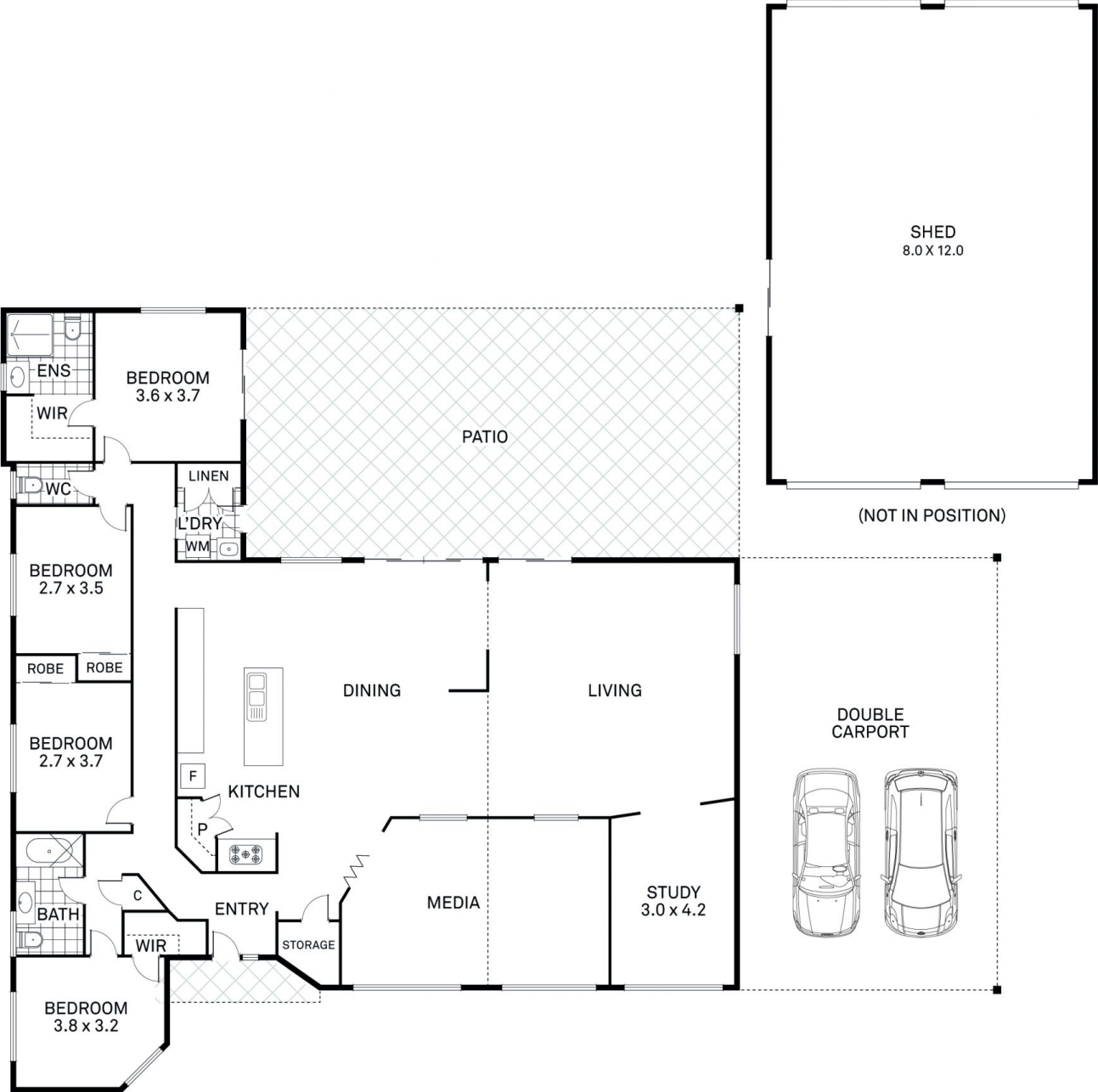
Outdoors, the property truly shines with a sparkling pool to

**Price** : \$ 665,000  
**Land Size** : 4364 sqm  
**View** : <https://www.kingsberry.com.au/sale/qld/townsville-district/kelso/residential/house/7453681>



Jayden Evans  
07 4772 2022  
0477 543 617  
[jayden.evans@tsvharcourts.com.au](mailto:jayden.evans@tsvharcourts.com.au)

# 22 Elberry Crescent, Kelso



AREA (M <sup>2</sup> )	
HOUSE	- 213.9
PATIO	- 73.1
CARPORNT	- 68.3
TOTAL	- 355.3