

# Harcourts Kingsberry



## 14 Taravale Street Bohle Plains QLD

4  2  2 

Looking for the perfect home to suit your family's lifestyle? Look no further than this immaculate four-bedroom, two-bathroom, two-car garage home in the highly sought-after Harris Crossing Estate in Bohle Plains. Built by the renowned Grady Homes just six years ago, this property boasts exceptional quality, craftsmanship, and attention to detail.

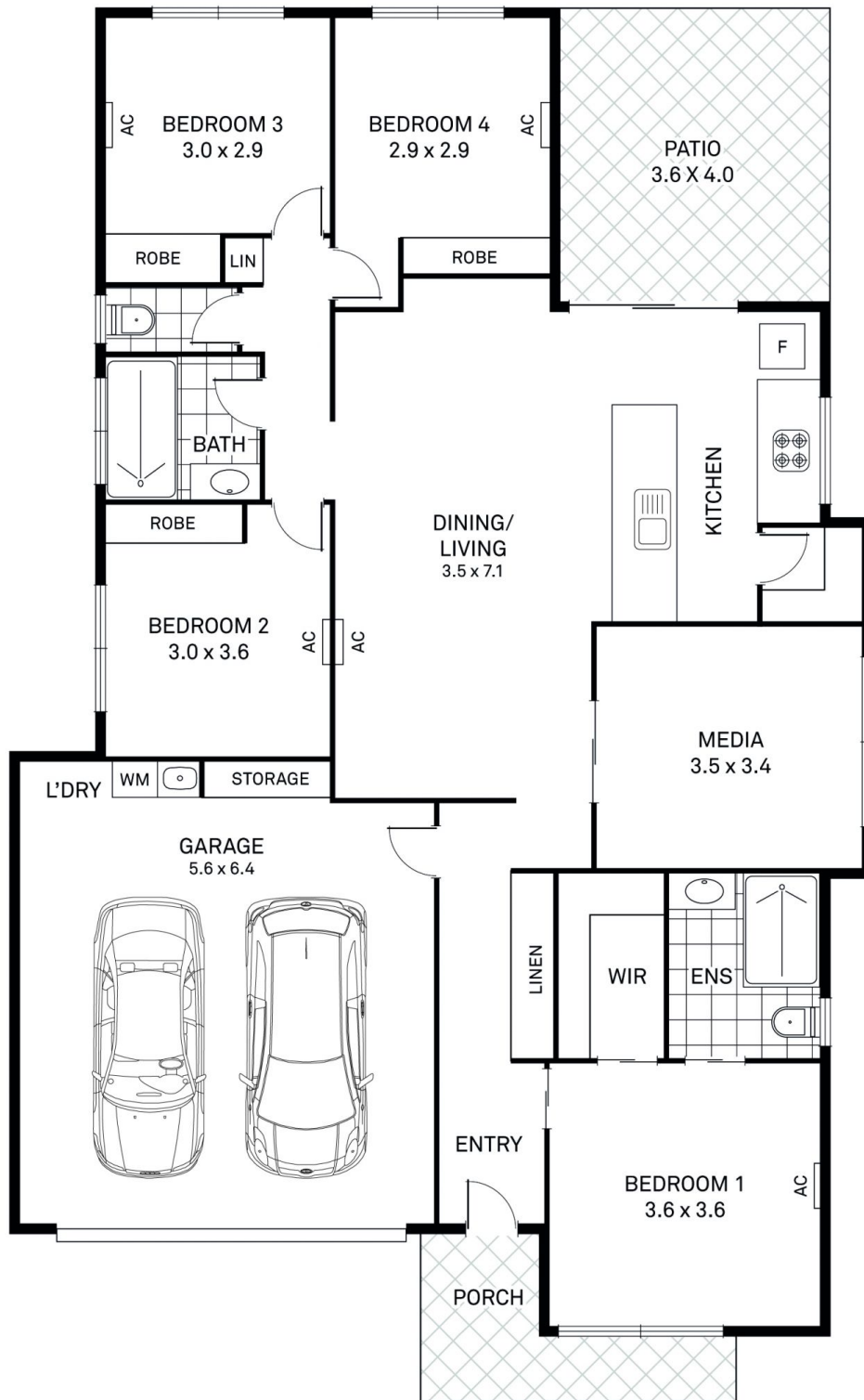
As you step inside, you'll be greeted by an expansive and light-filled open-plan living and dining area. Perfect for entertaining guests or relaxing with family, this space seamlessly blends indoor and outdoor living, with large sliding doors that open out to the stunning pool area. The sleek and modern kitchen is an entertainer's dream, with stainless steel appliances, plenty of bench space, and ample storage.

**Price** : \$ 532,500  
**Land Size** : 462 sqm  
**View** : <https://www.kingsberry.com.au/sale/qld/townsville-district/bohle-plains/residential/house/7528858>



Jayden Evans  
07 4772 2022  
0477 543 617  
[jayden.evans@tsvharcourts.com.au](mailto:jayden.evans@tsvharcourts.com.au)

# 14 Taravale St, Bohle Plains



AREA (M <sup>2</sup> )	
LIVING	- 134.80
GARAGE	- 37.68
PATIO	- 14.40
PORCH	- 6.68
<b>TOTAL</b>	<b>- 193.56</b>