

Harcourts Kingsberry



9 Humphrey Street West End QLD

6 2 2

Welcome to your dream home! Nestled in a sought-after neighbourhood, this character-filled highset Queenslander is a truly unique gem that offers an exceptional blend of charm and modern comforts. With its dual living arrangement, solar panels, two kitchens, a pool, and six spacious bedrooms, this property caters to your every need.

The dual living is perfect for extended families, guests, or those seeking additional rental income. With separate entrances, each living space boasts its own kitchen, living area, and bedrooms, providing flexibility and privacy for all occupants. Whether you're hosting gatherings or accommodating loved ones, this arrangement ensures everyone has their own comfortable space.

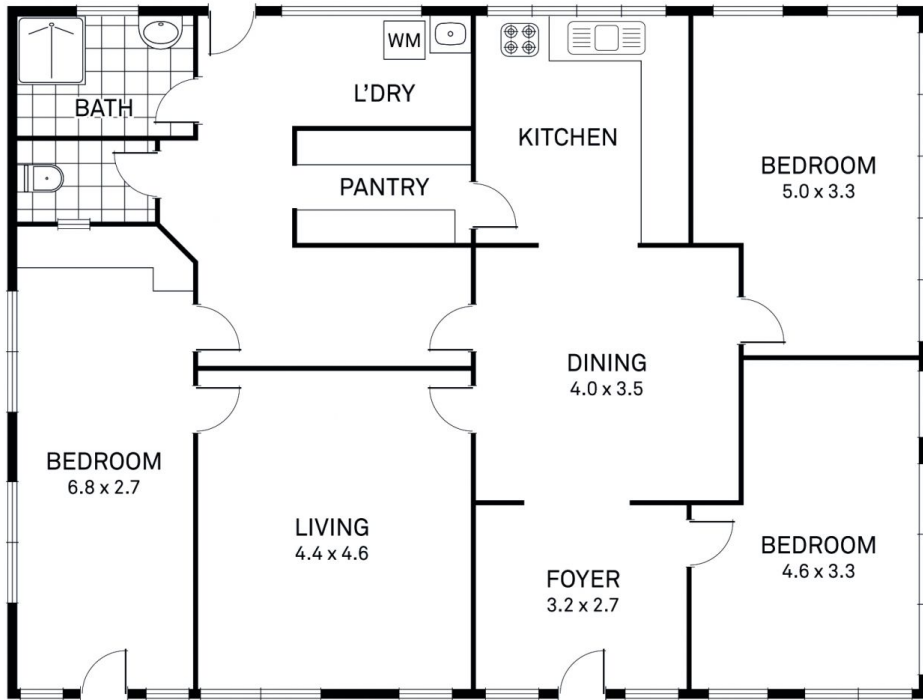
Features of YOUR new home: Massive 260m2 under roof!

Price : \$ 580,000
Land Size : 810 sqm
View : <https://www.kingsberry.com.au/sale/qld/townsville-district/west-end/residential/house/7601409>

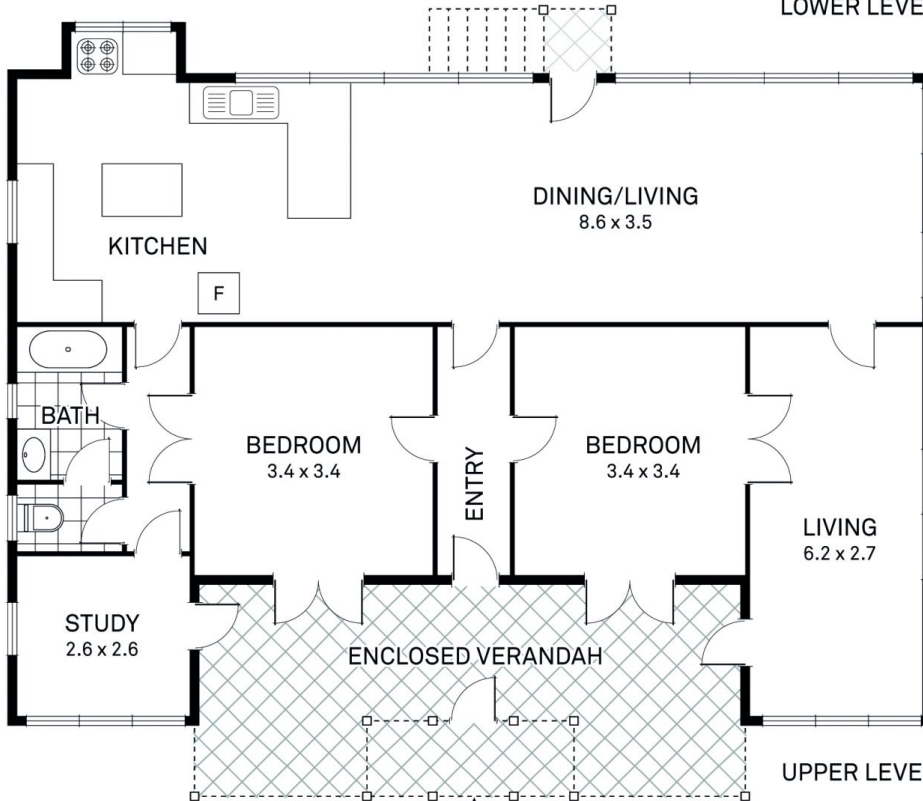


Stephanie Turnbull
07 4772 2022
0459 528 095
stephanie.turnbull@tsvharcourts.com.au

9 Humphrey Street, West End



LOWER LEVEL



UPPER LEVEL



| | |
|------------------------|---------|
| AREA (M ²) | |
| HOUSE LOWER | - 127.4 |
| HOUSE UPPER | - 132.6 |
| TOTAL | - 260.0 |