

Harcourts Kingsberry



8 Wynberg Drive Annandale QLD

4 2 4

Need a shed for all your big boy's toys or work vehicles? Are you wanting to move into the suburbs from acreage but still wanting a larger block? Do you love gardening and entertaining? Look no further 8 Wynberg Drive, Annandale ticks those boxes and a few more.

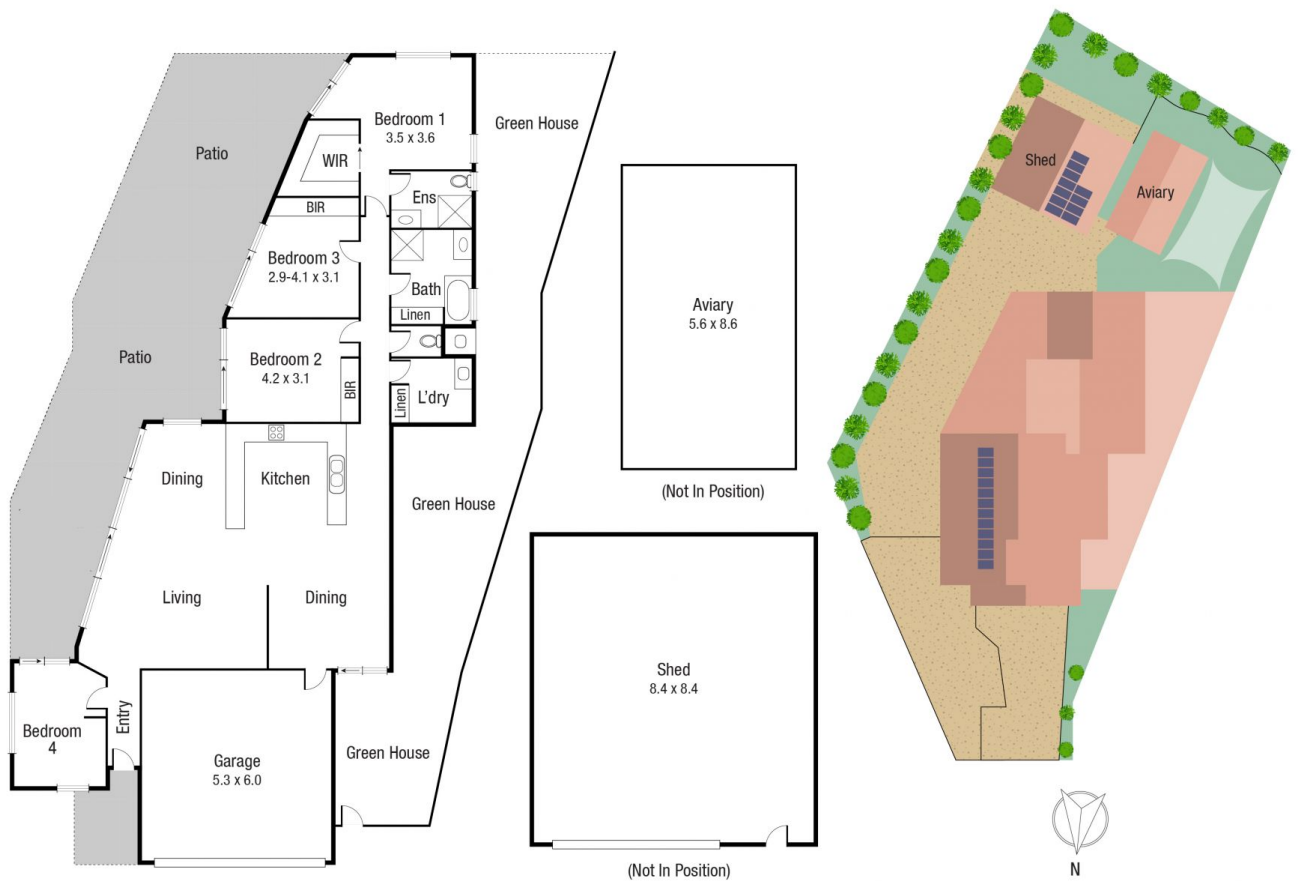
In popular Annandale just minutes from schools, shops, and sporting facilities this property will appeal to the buyer looking for a comfortable home with the opportunity to enjoy the outdoors and utilise the huge shed to its full potential. The owners have cleverly utilised the 1,071 sqmt block so the gardens and surrounds compliment the home ensuring the outside areas are a comfortable space to enjoy all year round.

For the avid gardener there are established easy care gardens, all with automatic sprinklers and a pergola like structure along the side of the home that has been beautifully designed featuring a pebble and paved

Price : \$ 632,500
Land Size : 1071 sqm
View : <https://www.kingsberry.com.au/sale/qld/townsville-district/annandale/residential/house/7671398>



Sibby Di Bartolo
07 4772 2022
0417 606 157
sibby.dibartolo@tsvharcourts.com.au



Scale in metres. Indicative only. Dimensions are approximate. All information contained herein is gathered from sources we believe to be reliable. However we cannot guarantee its accuracy and interested persons should rely on their own enquiries.

TOTAL AREA : 252 sq.m

8 Wynberg Dr, Annandale