

Harcourts Kingsberry



43 Kalynda Parade Bohle Plains QLD

4 2 2

Move-in ready homes are in demand and 43 Kalynda Parade is ready and waiting. Located in the family friendly suburb of Bohle Plains this home offers the perfect location for the busy growing family. Recently given a freshen up and offering double gate side access this property presents buyers with the opportunity to utilise the backyard to its full potential.

The location of this home provides plenty of outdoor choices and loads to keep the kids entertained the local tennis centre, family friendly parks and playgrounds, numerous walking paths are close by and there is easy access to the Ring Road making it only minutes from the James Cook University and the University Hospital.

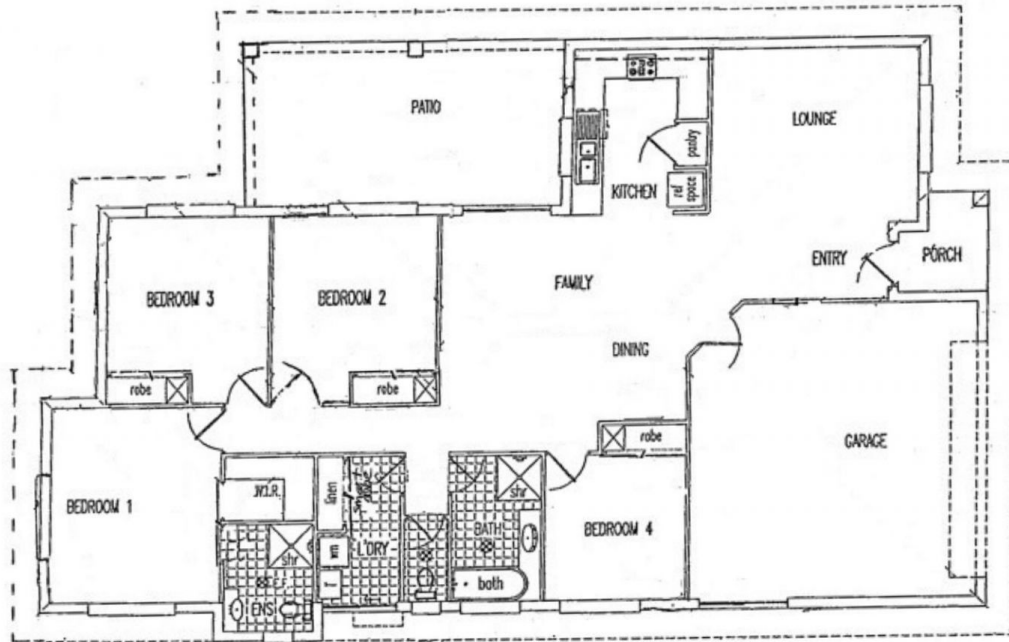
Property features:
Air conditioned throughout
Tiled living area

Price : \$ 440,000
Land Size : 618 sqm
View : <https://www.kingsberry.com.au/sale/qld/townsville-district/bohle-plains/residential/house/7685190>



Sibby Di Bartolo
07 4772 2022
0417 606 157
sibby.dibartolo@tsvharcourts.com.au

FLOOR PLAN: 43 KALYNDA PARADE, BOHLE PLAINS



*Indicative only. We cannot guarantee its accuracy.
Interested persons should rely on their own enquiries