

# Harcourts Kingsberry



14 Goldsworthy Street Heatley QLD

3  2  2 

This radiant residence combines a comfortable high set layout with modern inclusions to provide a stress-free lifestyle. Contemporary flair and style shines throughout this home spanning over two levels, where all living is essentially on the upper level with the guest room/home office on the lower level accommodated by its own toilet and bathroom.

Upstairs you are greeted by welcoming deck ideal for your morning cuppa or evening beverages. The large light filled living area highlights generous windows capturing breezes and light ideal for our climate.

The well-equipped kitchen is tucked away offering plenty of cupboard and bench space adjoining the dining area.

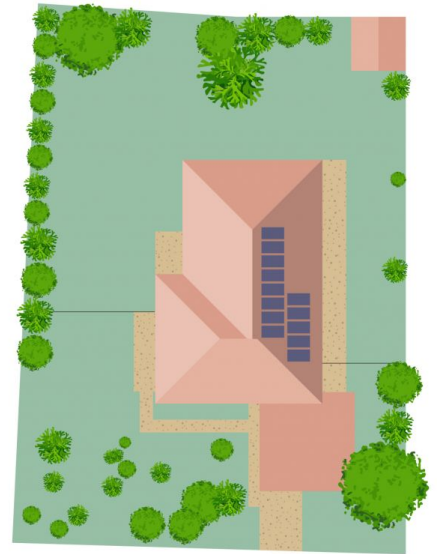
Timber floors flow throughout the living and bedrooms, all bedrooms are fitted with built in robes and air-conditioning.

The central bathroom features shower and bath combo plus a separate toilet for extra convenience.

**Price** : \$ 360,000  
**Land Size** : 612 sqm  
**View** : <https://www.kingsberry.com.au/sale/qld/townsville-district/heatley/residential/house/7736698>



Tammy Tyrrell  
07 4772 2022  
0412 534 704  
[tammy.tyrrell@tsvharcourts.com.au](mailto:tammy.tyrrell@tsvharcourts.com.au)



Scale in metres. Indicative only. Dimensions are approximate. All information contained herein is gathered from sources we believe to be reliable. However we cannot guarantee its accuracy and interested persons should rely on their own enquiries.

**TOTAL AREA : 198.7 sq.m**

## 14 Goldsworthy