

Harcourts Kingsberry



7 Finschhafen Street Aitkenvale QLD

4 1 3

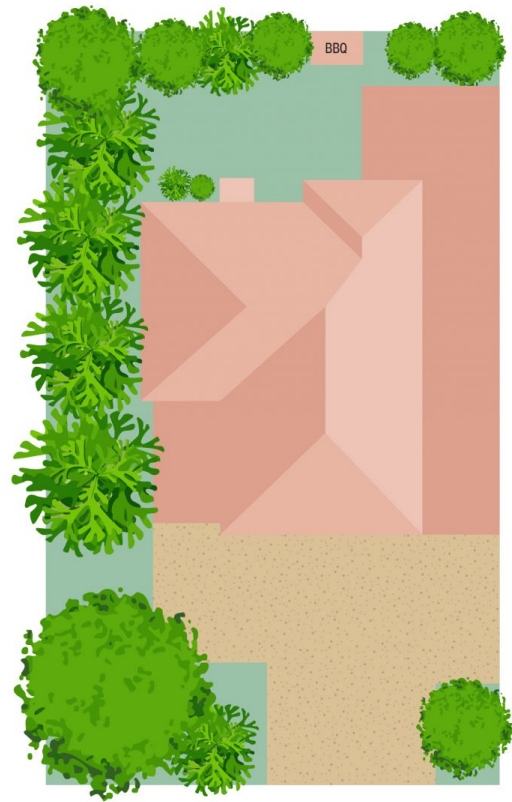
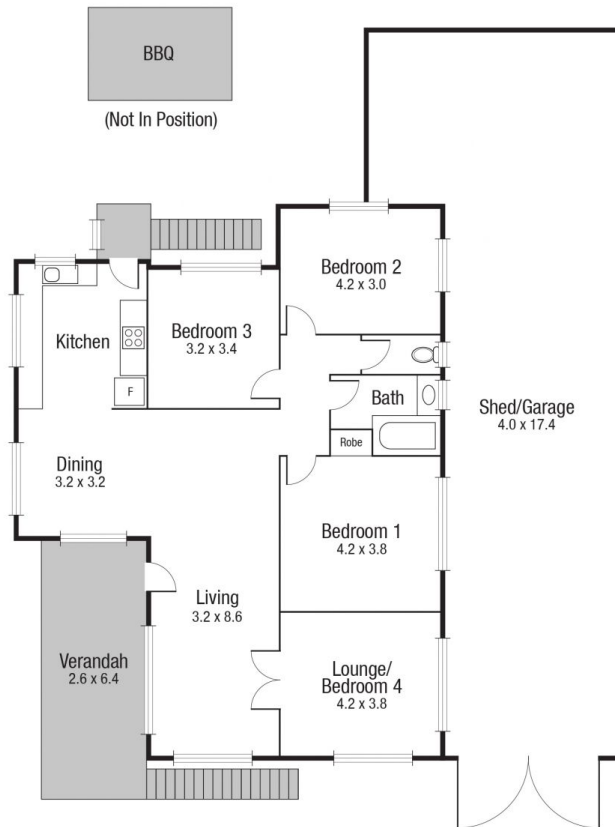
With a relaxing front deck and plenty of living space, this highset home enjoys a central location only 2 minutes from Stockland Plaza. Although not legal height it has plenty of room underneath including a storage room and a bar. A large 16m X 4m garage runs the length of the house down the right side. Be quick!
Currently rented at \$440pw.

Price : \$ 347,000
Land Size : 607 sqm
View : <https://www.kingsberry.com.au/sale/qld/townsville-district/aitkenvale/residential/house/7836809>

Polished hardwood timber floors
Functional kitchen with good storage
Open plan living and dining area
Four good-sized bedrooms
Split system air-conditioning to 2 bedrooms
Covered entertainment area and barbeque area
Refurbished casement windows
Front deck with colorbond roof



Malcolm Thomson
07 4772 2022
0400 545 664
malcolm.thomson@tsvharcourts.com.au



Scale in metres. Indicative only. Dimensions are approximate. All information contained herein is gathered from sources we believe to be reliable. However we cannot guarantee its accuracy and interested persons should rely on their own enquiries.

TOTAL : 214 sq.m

7 Finschhafen