

Harcourts Kingsberry



11 Bell Street South Townsville QLD

5 4 6

This large home in a superb, central location, only minutes from the city is ideal for extended family living. Originally designed as a duplex, it has been converted into a large home with four bedrooms and two bathrooms upstairs, multiple living areas, and a large office with an ensuite and walk-through wardrobe downstairs.

The original large garage has been converted into a spacious studio unit/granny flat with a separate entry, external private patio, and internal entry to the main house. This unit also has a fold-away queen-size bed for extra space.

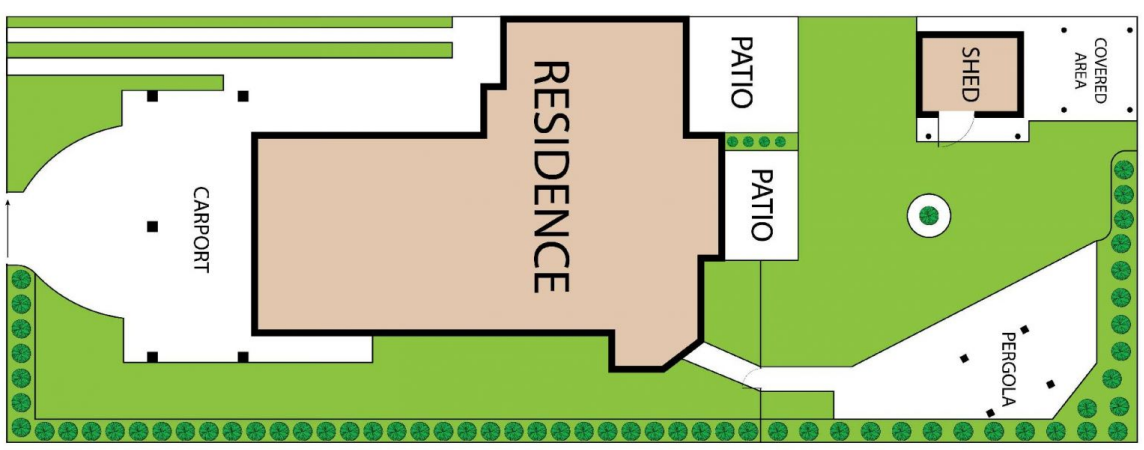
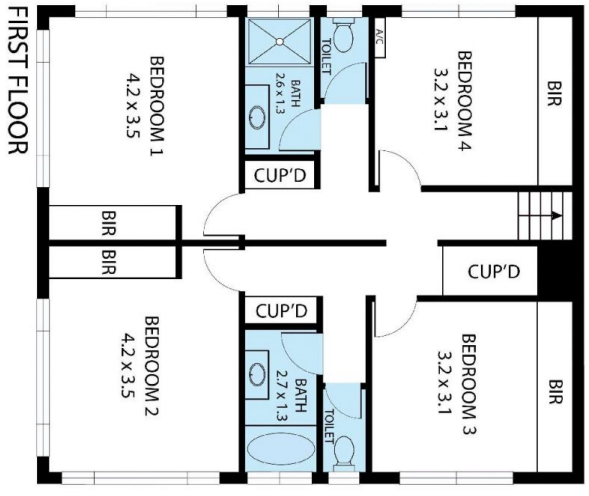
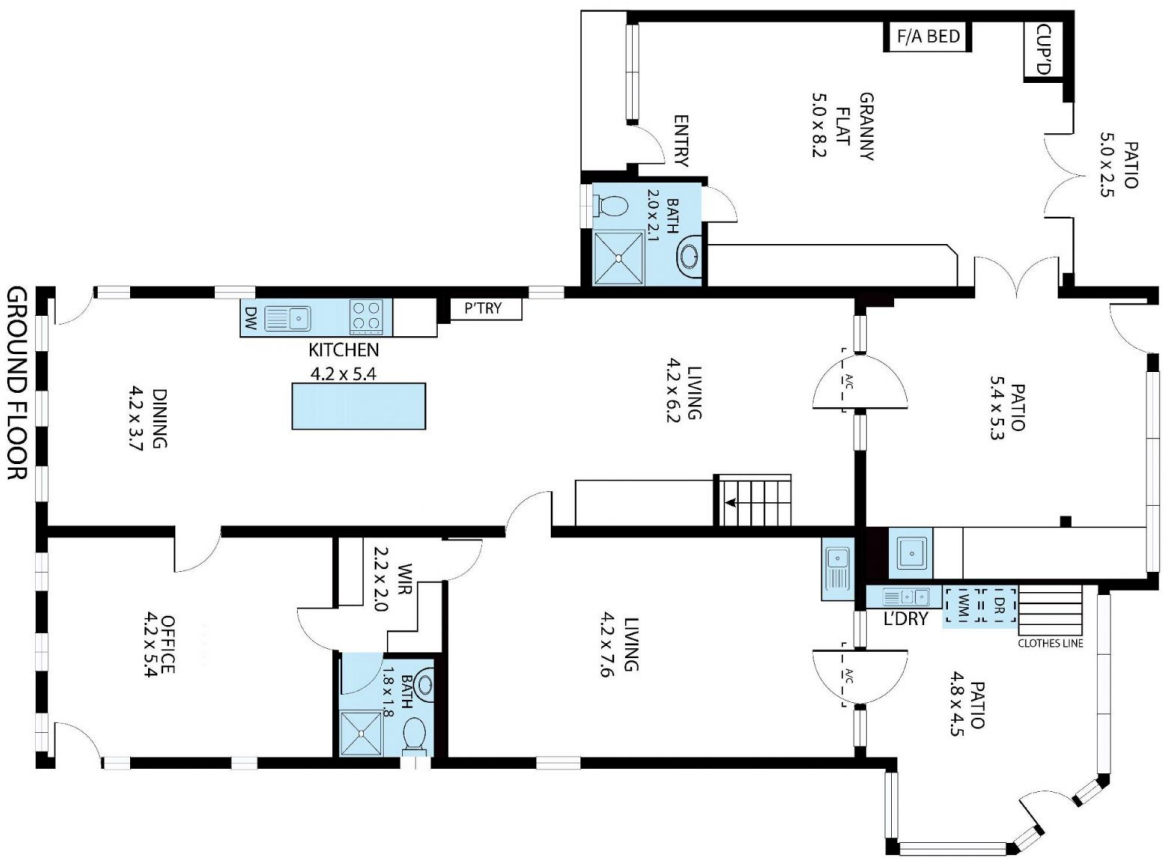
When it comes to convenience and location this property is exceptional.

1012sqm block with side access
Spacious bedrooms and multiple living areas
Security screens and air-conditioned throughout

Price : \$ 700,000
Land Size : 1012 sqm
View : <https://www.kingsberry.com.au/sale/qld/townsville-district/south-townsville/residential/home/7993980>



Malcolm Thomson
07 4772 2022
0400 545 664
malcolm.thomson@tsvharcourts.com.au



11 Bell Street, South Townsville 4810

Whilst every attempt has been made to ensure the accuracy of the floor plan contained here, measurements of doors, windows, rooms and any other items are approximate and no responsibility is taken for any error, omission, or misstatement. This plan is for illustrative purposes only and should be used as such by any prospective purchaser.