

# Harcourts Kingsberry



**40 Carr Street Hermit Park QLD**

**3**  **2**  **2** 

As you step through the front gate, you instantly embrace the unique ambiance, signaling that you are walking into something special. Inside, the captivating charm of the interior is accentuated by striking timber floorboards and a lead-light window and door, creating a sense of spaciousness and warmth.

The home is bathed in light, flowing seamlessly from one room to the next. The inviting living and dining space is surrounded by windows dressed in plantation shutters. Experience the advantages of the Queenslander design, which minimizes the need for air conditioning, or harness the power of the sun with the newly installed solar panels.

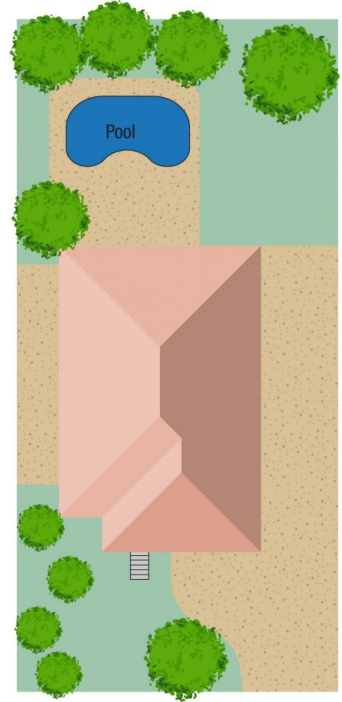
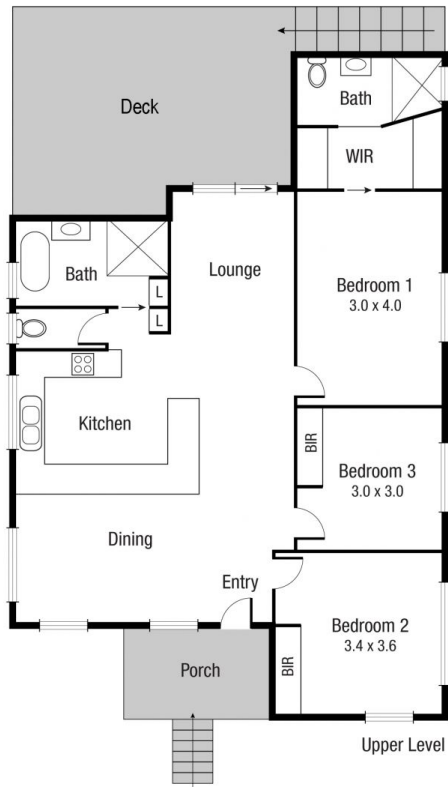
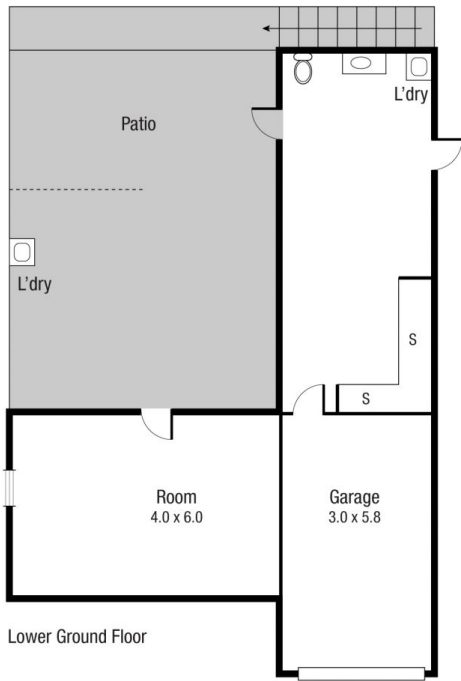
A delightful kitchen features plenty of bench and cupboard space with gas cooking. Arched by decorative fretwork connecting the dining by a large timber servery for extra cooking convenience.

The main bedroom is a standout and sure to impress,

**Price** : \$ 640,000  
**Land Size** : 571 sqm  
**View** : <https://www.kingsberry.com.au/sale/qld/townsville-district/hermit-park/residential/house/8010756>



**Tammy Tyrrell**  
07 4772 2022  
0412 534 704  
[tammy.tyrrell@tsvharcourts.com.au](mailto:tammy.tyrrell@tsvharcourts.com.au)



Scale in metres. Indicative only. Dimensions are approximate. All information contained herein is gathered from sources we believe to be reliable. However we cannot guarantee its accuracy and interested persons should rely on their own enquiries.

TOTAL AREA : 264.9 sq.m

40 Carr St, Hermit Park