

Harcourts Kingsberry



13 Lerida Street Kirwan QLD

3 1 2

This radiant residence combines a comfortable high set layout with modern inclusions to provide a stress-free lifestyle. Contemporary flair and style shines throughout this home spanning over two levels, where all living is essentially on the upper level, with the rumpus room/home office on the lower level adjoining the vast entertaining area.

Upon entry you will be greeted by internal stairs leading up to the welcoming formal lounge connecting to the front balcony - ideal spot for your morning cuppa.

The well-equipped kitchen is tucked away offering plenty of cupboard and bench space adjoining the dining area.

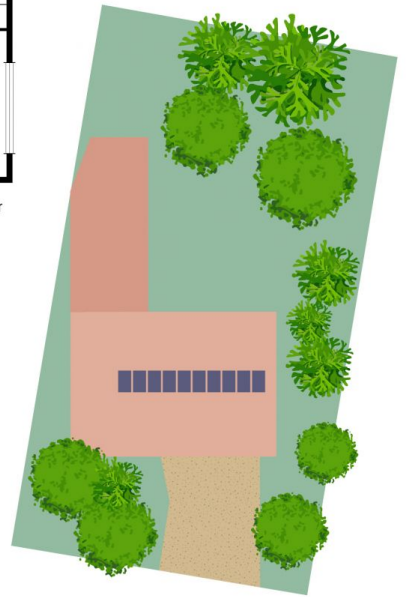
Timber floors flow throughout the living and bedrooms, all bedrooms are fitted with built in robes and air-conditioning. The central bathroom features shower and bath combo plus a separate toilet for extra convenience.

Entertaining continues to shine outdoors by the spa setting

Price : \$ 500,000
Land Size : 728 sqm
View : <https://www.kingsberry.com.au/sale/qld/townsville-district/kirwan/residential/house/8075742>



Tammy Tyrrell
07 4772 2022
0412 534 704
tammy.tyrrell@tsvharcourts.com.au



Scale in metres. Indicative only. Dimensions are approximate. All information contained herein is gathered from sources we believe to be reliable. However we cannot guarantee its accuracy and interested persons should rely on their own enquiries.

TOTAL AREA : 245.3 sq.m

13 Lerida Street, Kirwan