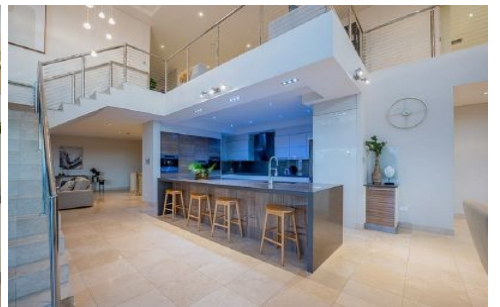


Harcourts Kingsberry



29 Britomart Street Bushland Beach QLD

5 🚗 5 🚗 5 🚗

WOW!! - This magnificent property will absolutely blow your mind. With approximately 1000sqm of floor area spread over three levels (with elevator access to all three levels) it is one of the largest homes in Townsville. If you are in the market for sheer opulence and indulgence then you just absolutely have to inspect this property as soon as possible. Not only is it Bushland Beach's finest residence, it is priced at well over \$1M below current replacement cost making it outstanding value. Perched high up on the hill it has absolutely sensational views of the Coral Sea all the way from Magnetic Island in the east to the Palm Island Group in the west:

LEVEL ONE:

* Massive garage space providing parking for up to six cars or utilize some of the space for a workshop. In

Price : Offers over \$2,650,000
Building Size : 1000 sqm
Land Size : 1007 sqm
View : <https://www.kingsberry.com.au/sale/qld/townsville-district/bushland-beach/residential/house/8085638>



Cameron Cole
07 4772 2022
0423 692 422
cameron.cole@tsvharcourts.com.au

<https://www.kingsberry.com.au>

210 Charters Towers Road Hermit Park QLD
07 47 722 022



Scale in metres. Indicative only. Dimensions are approximate. All information contained herein is gathered from sources we believe to be reliable. However we cannot guarantee its accuracy and interested persons should rely on their own enquiries.

29 Britomart