

Harcourts Kingsberry



33 Timbury Way Mount Louisa QLD

4 3 4

Welcome to 33 Timbury Way, Mount Louisa

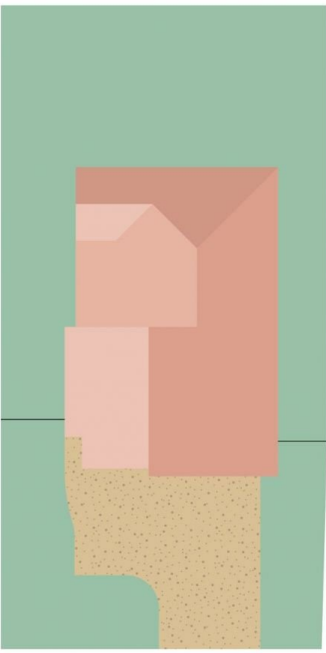
This extravagant quality, two level home was Built by award winning Parsons Constructions. Built to maximize take advantage of this elevated 740m2 Block, this home offers uninterrupted and peaceful panoramic views perfect for entertaining or relaxing. This home has also been specifically designed to be energy efficient and built to capture the cool north/north easterly breezes making this a cool and very comfortable home.

Sitting proudly in the established Crestbrook Estate and surrounded by other high quality homes ensures a peaceful lifestyle equally suited to the professional couple or family. This is a perfect location for taking leisurely walks and offers easy access to the rest of Townsville.

Price : Offer Over \$789,000
Building Size : 172 sqm
Land Size : 740 sqm
View : <https://www.kingsberry.com.au/sale/qld/townsville-district/mount-louisa/residential/house/8093481>



Kimberley Sorbello
07 4772 2022
0459 351 825
kimberley.sorbello@tsvharcourts.com.au



Scale in metres. Indicative only. Dimensions are approximate. All information contained herein is gathered from sources we believe to be reliable. However we cannot guarantee its accuracy and interested persons should rely on their own enquiries.

TOTAL AREA : 286.5 sq.m

33 Timbury Way, Mount Louisa