

Harcourts Kingsberry



20 Hilltop Drive Mount Louisa QLD

3 1 10

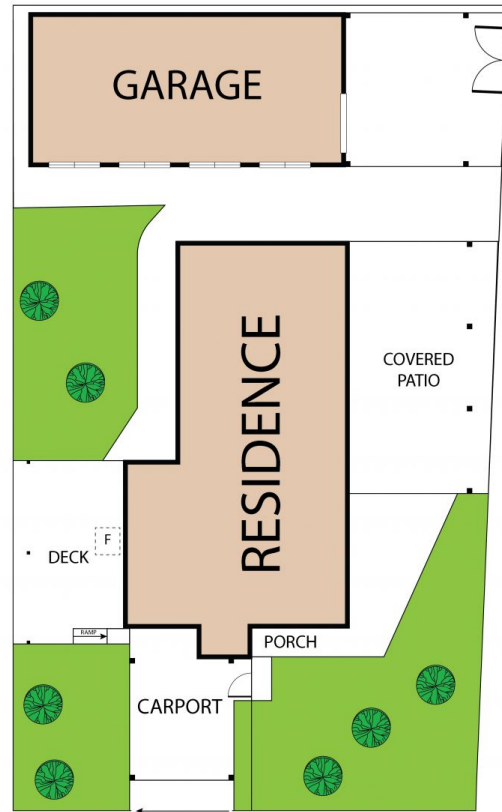
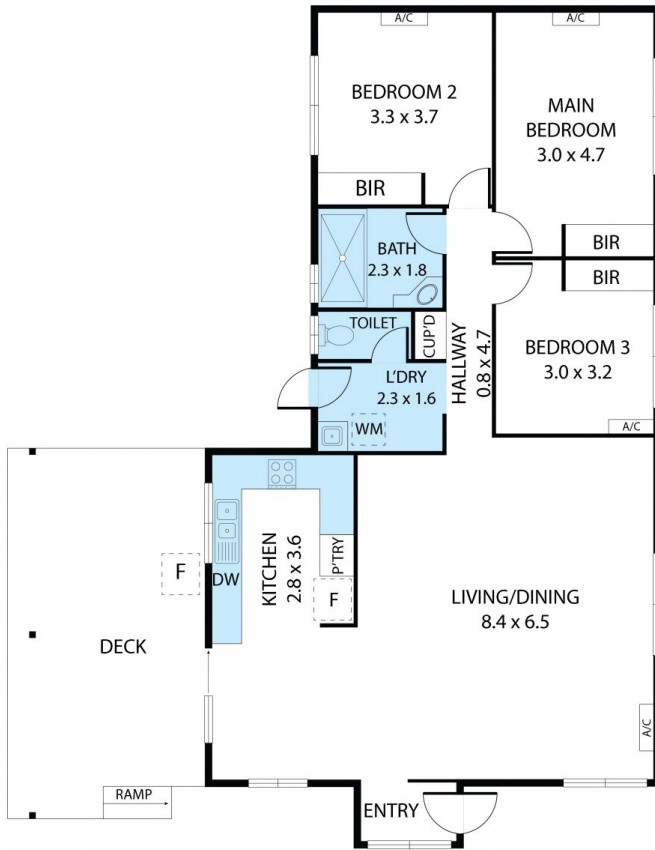
Discover the perfect blend of comfort and functionality in this remarkable property, designed to meet the needs of modern living and vehicle accommodation. This charming home features three generously sized bedrooms, each offering a peaceful retreat with ample natural light and closet space. The central bathroom, stylishly appointed with contemporary fixtures, ensures convenience for everyday use, while a separate toilet adds an extra layer of practicality for families and guests.

Outside, the property excels in accommodating a variety of vehicles and outdoor equipment. A single-car carport directly adjacent to the house provides easy access and protection for your vehicle. To the side of the house, a spacious carport stands ready to house a caravan, boat, trailer, or even two cars, making it an ideal space for those who enjoy outdoor adventures or need additional storage.

Price : Offers Over \$559,000
Land Size : 660 sqm
View : <https://www.kingsberry.com.au/sale/qld/townsville-district/mount-louisa/residential/house/8116119>



Jayden Evans
07 4772 2022
0477 543 617
jayden.evans@tsvharcourts.com.au



20 Hilltop Drive, Mount Louisa 4814

TOTAL APPROX. FLOOR AREA 108 SQ.M

Whilst every attempt has been made to ensure the accuracy of the floor plan contained here, measurements of doors, windows, rooms and any other items are approximate and no responsibility is taken for any error, omission, or misstatement. This plan is for illustrative purposes only and should be used as such by any prospective purchaser.