

# Harcourts Kingsberry



## 186 River Park Drive Annandale QLD

5 3 2

Warm and welcoming with stunning street appeal this home is sure to impress. Thoughtfully designed with every detail of easy modern living in mind, this abode is truly special and will provide your family with many memorable moments - you will never want to leave!!

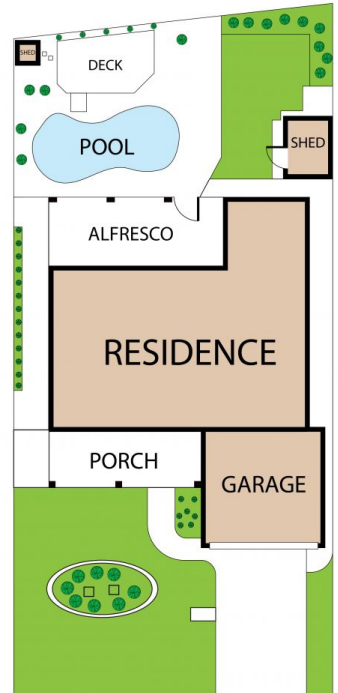
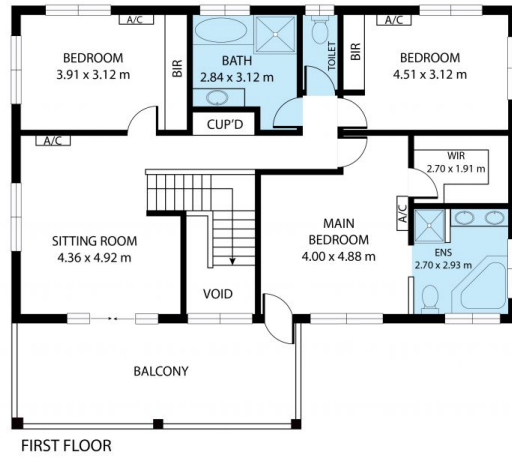
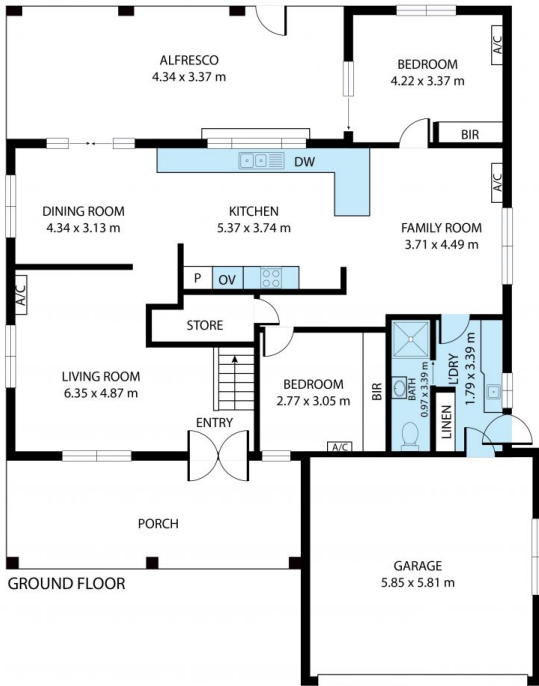
Upon arrival, you are instantly captivated by its exquisite presence of grassland views alongside a glance of kangaroos hopping and the sounds of birds chirping, the ambience here sets the setting for the lifestyle that awaits you.

Step inside this serene beauty where this stunning double-storey residence awaits to elevate your family's lifestyle. Meticulously designed for everyone to enjoy with a splash of space blended with comfort and style.

**Price** : Just Listed  
**Land Size** : 561 sqm  
**View** : <https://www.kingsberry.com.au/sale/qld/townsville-district/annandale/residential/house/8167769>



Tammy Tyrrell  
07 4772 2022  
0412 534 704  
[tammy.tyrrell@tsvharcourts.com.au](mailto:tammy.tyrrell@tsvharcourts.com.au)



186 River Park Drive, Annandale, QLD, 4814

Whilst every attempt has been made to ensure the accuracy of the floor plan contained here, measurements of doors, windows, rooms and any other items are approximate and no responsibility is taken for any error, omission, or misstatement. This plan is for illustrative purposes only and should be used as such by any prospective purchaser.